



**India Meteorological Department  
(Ministry of Earth Sciences)**

**HOURLY UPDATE ON SEVERE CYCLONIC STORM “DANA”**

**BULLETIN NO. 5**

DATE: 24-10-2024

TIME OF ISSUE: 2215 HRS IST

<b>DATE/TIME (IST) OF OBSERVATION</b>	<b>BASED ON 24-10-2024 (2130 HRS IST)</b>
LOCATION LATITUDE/LONGITUDE	THE SEVERE CYCLONIC STORM “DANA” (PRONOUNCED AS DANA) OVER NORTHWEST BAY OF BENGAL MOVED NORTH-NORTHWESTWARDS WITH A SPEED OF 13 KMPH DURING PAST 3 HOURS AND LAY CENTRED AT 2130 HRS IST OF TODAY, THE 24TH OCTOBER, OVER THE SAME REGION, NEAR LATITUDE 20.10° N AND LONGITUDE 87.30°E, ABOUT 60 KM EAST OF PARADIP (ODISHA), 80 KM SOUTH-SOUTHEAST OF DHAMARA (ODISHA) AND 180 KM SOUTH-SOUTHWEST OF SAGAR ISLAND (WEST BENGAL).
CURRENT INTENSITY WIND SPEED	SEVERE CYCLONIC STORM 105-115 KMPH GUSTING TO 125 KMPH
FORECAST	IT IS VERY LIKELY TO MOVE NORTH-NORTHWESTWARDS AND CROSS NORTH ODISHA AND WEST BENGAL COASTS BETWEEN PURI AND SAGAR ISLAND CLOSE TO BHITARKANIKA AND DHAMARA (ODISHA) DURING MID-NIGHT OF 24TH TO MORNING OF 25TH OCTOBER, 2024 AS A SEVERE CYCLONIC STORM WITH A WIND SPEED OF 100-110 KMPH GUSTING 120 KMPH.

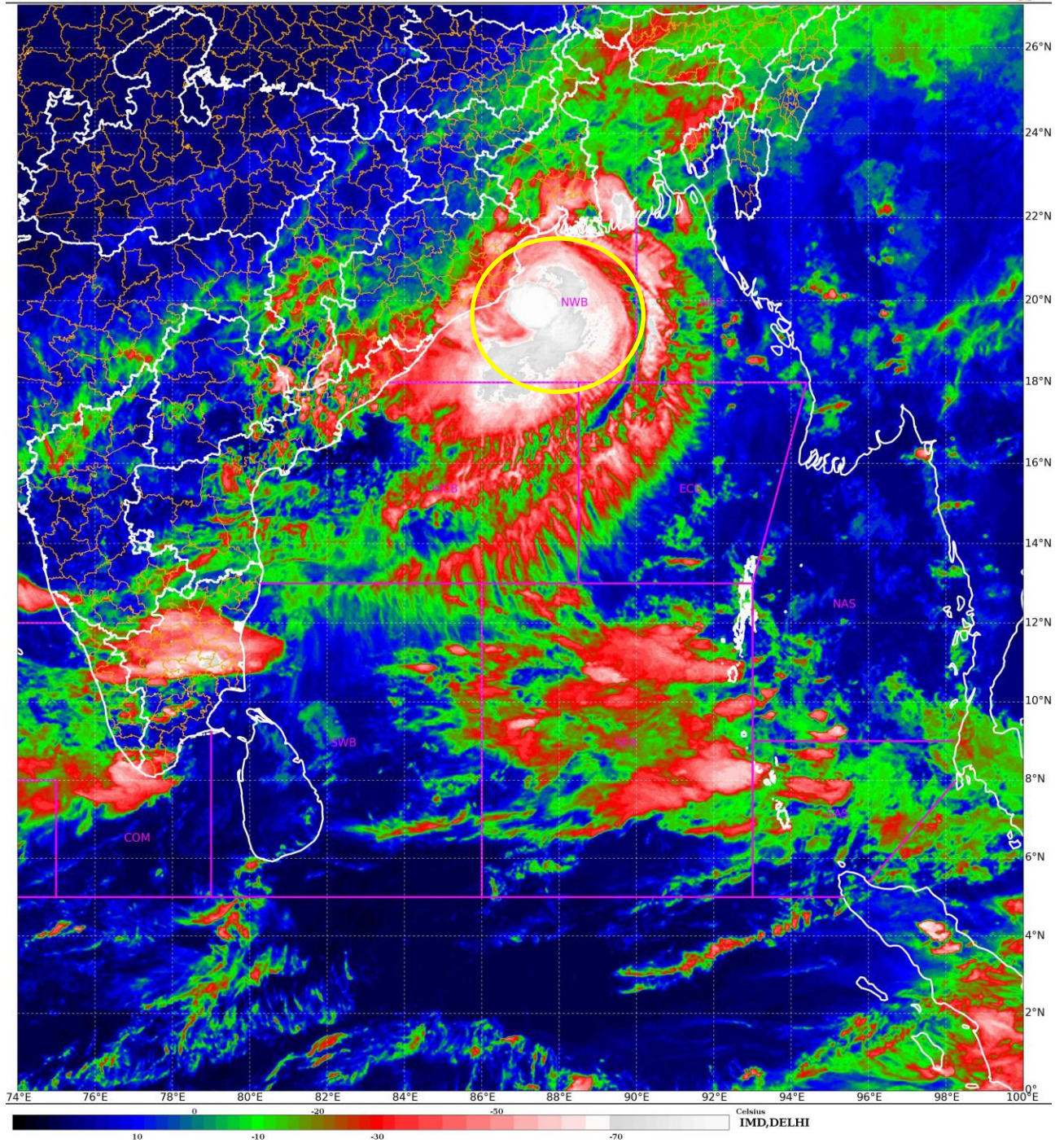
**OBSERVED WEATHER:**

<b>STATION</b>	<b>RAINFALL (MM) (0830-2130 HRS IST)</b>	<b>WINDSPEED (KNOTS) AT 2130 HRS IST</b>	<b>STATION</b>	<b>RAINFALL (0830-2130 HRS IST)</b>	<b>WINDSPEED (KNOTS) AT 2130 HRS IST</b>
BHUBANESWAR	15.1	8/NWLY	HALDIA	23.0	6/NELY
BALASORE	24.4	8/NELY	DIGHA	30.0	6/NELY
CHANDBALI	30.6	2/NLY	DUMDUM	8	6/NELY
PARADIP	37.0	11/WLY			
PURI	15.4	10/NNWLY			

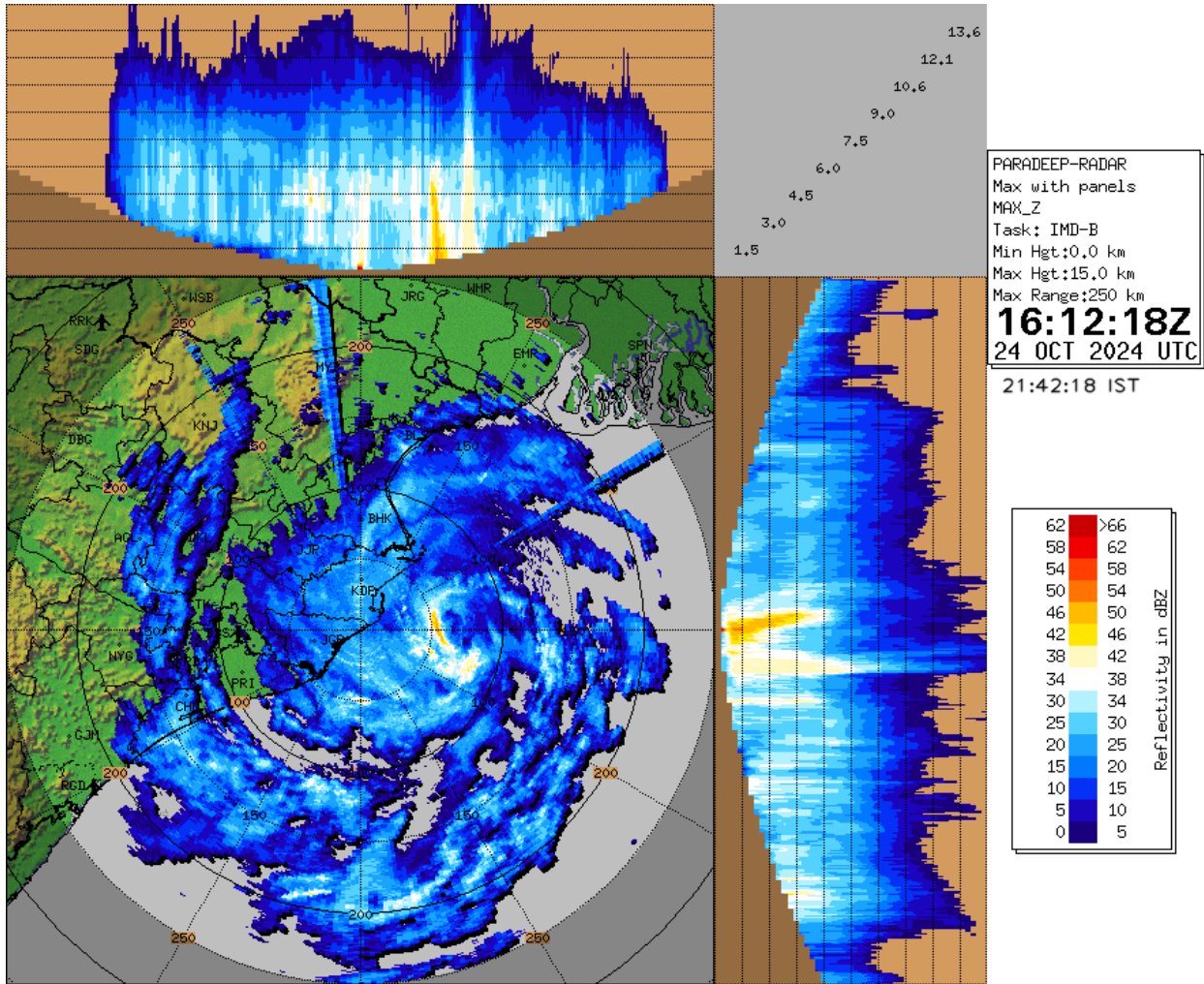
# SATELLITE IMAGERY

SAT : INSAT-3DR IMG  
IMG\_TIR1\_TEMP 10.8 um  
LIC Mercator

24-10-2024/(1415 to 1442) GMT  
24-10-2024/(1945 to 2012) IST

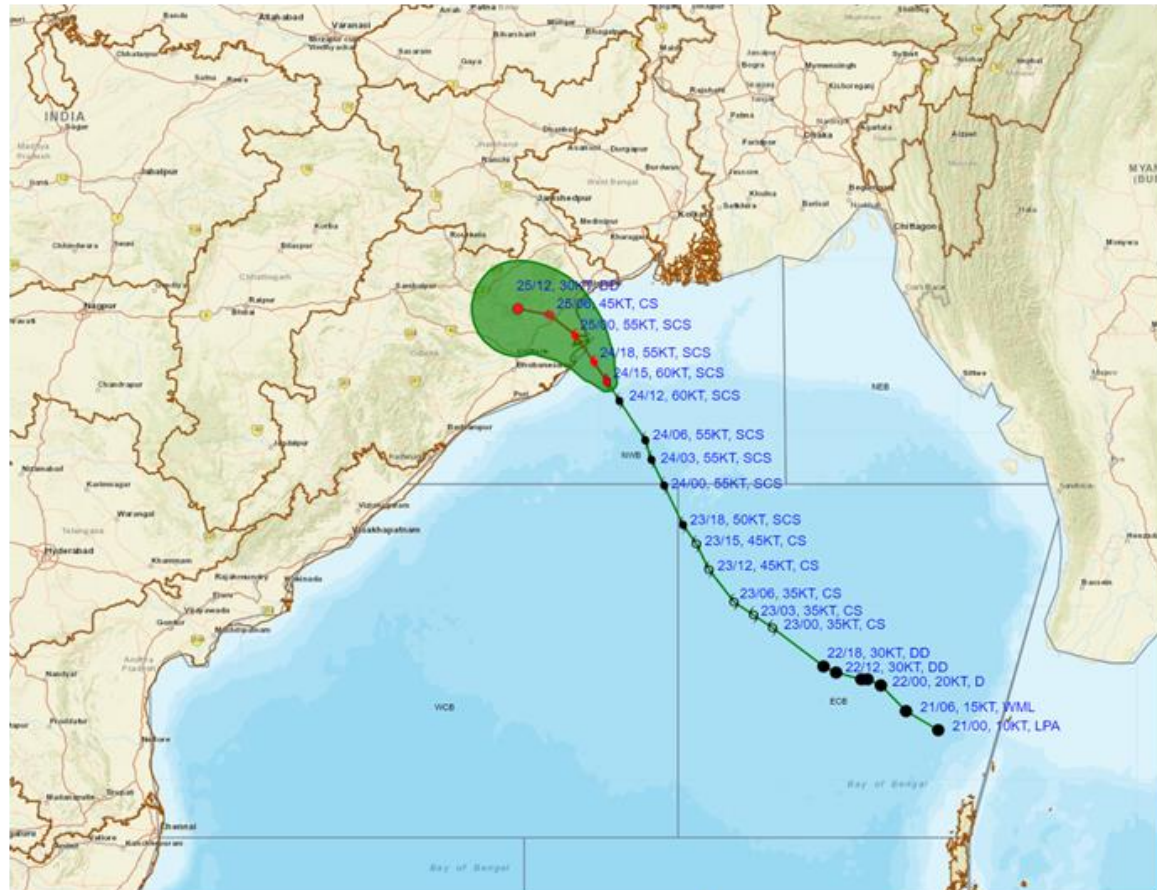


# RADAR OBSERVATIONS (MAX\_Z) OF DWR PARADIP





**OBSERVED AND FORECAST TRACK ALONGWITH CONE OF UNCERTAINTY OF SEVERE CYCLONIC STORM 'DANA' OVER NORTHWEST BAY OF BENGAL BASED ON 1500 UTC (2030 Hrs. IST) OF 24<sup>th</sup> OCTOBER 2024**



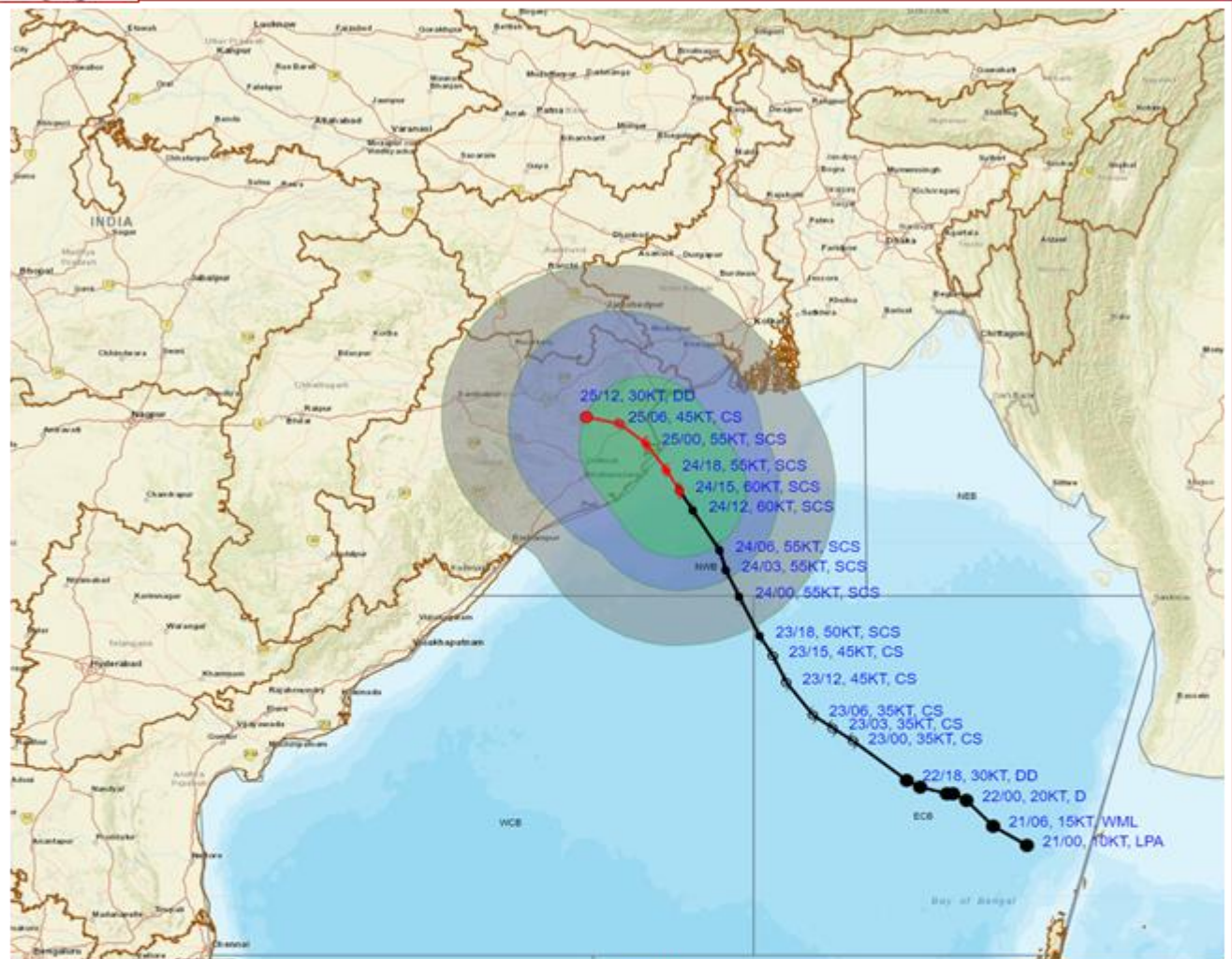
DATE/TIME : IN UTC  
 IST : UTC + 0530  
 KT : NAUTICAL MILE/HOUR = 1.85 KM/HOUR  
 LPA : LOW PRESSURE AREA  
 WML : WELL MARKED LOW PRESSURE AREA  
 D : DEPRESSION (17-27 KT)  
 DD : DEEP DEPRESSION (28-33 KT)  
 CS : CYCLONIC STORM (34-47 KT)  
 SCS : SEVERE CYCLONIC STORM (48-63 KT)  
 VSCS : VERY SEVERE CYCLONIC STORM (64-89 KT)  
 ESCS : EXTREMELY SEVERE CYCLONIC STORM (90-119 KT)  
 SuCS : SUPER CYCLONIC STORM (≥120 KT)

● LESS THAN 34 KT  
 ○ 34-47 KT  
 ○ ≥ 48 KT  
 — OBSERVED TRACK  
 — FORECAST TRACK  
 ● CONE OF UNCERTAINTY

Forecast	DISTANCE (KM) AND DIRECTION FROM STATIONS		
Date and Time (UTC)	PARADIP (CWR)	DHAMARA	SAGAR ISLAND
24.10.24/1500	70, ESE	90, SSE	190, SSW
25.10.24/1200	130, NW	110, WNW	230, WSW



**OBSERVED AND FORECAST TRACK ALONGWITH QUADRANT WIND DISTRIBUTION OF SEVERE CYCLONIC STORM 'DANA' OVER NORTHWEST BAY OF BENGAL BASED ON 1500 UTC (2030 Hrs. IST) OF 24<sup>th</sup> OCTOBER 2024**



DATE/TIME : IN UTC  
 IST : UTC + 0530  
 KT : NAUTICAL MILE S/HOUR = 1.85 KM/HOUR  
 LPA : LOW PRESSURE AREA  
 WML : WELL MARKED LOW PRESSURE AREA  
 D : DEPRESSION (17-27 KT)  
 DD : DEEP DEPRESSION (28-33 KT)  
 CS : CYCLONIC STORM (34-47 KT)  
 SCS : SEVERE CYCLONIC STORM (48-63 KT)  
 VSCS : VERY SEVERE CYCLONIC STORM (64-89 KT)  
 ESCS : EXTREMELY SEVERE CYCLONIC STORM (90-119 KT)  
 SuCS : SUPER CYCLONIC STORM (≥120 KT)

● LESS THAN 34 KT  
 ○ 34-47 KT  
 ● ≥ 48 KT  
 — OBSERVED TRACK  
 — FORECAST TRACK  
 — CONE OF UNCERTAINTY  
**AREA OF MAXIMUM SUSTAINED WIND SPEED:**  
 ■ 28-33 KT (52-61 KMPH)  
 ■ 34-49 KT (62-91 KMPH)  
 ■ 50-63 KT (92-117 KMPH)  
 ■ ≥ 64 KT (≥118 KMPH)

**IMPACT OVER THE SEA**

MSW (knot/kmph)	Impact	Action
28-33 (52-61)	Very rough seas	Total suspension of fishing operations
34-49 (62-91)	High to very high seas	Total suspension of fishing operations
50-63 (92-117)	Very high seas	Total suspension of fishing operations
≥ 64 (≥118)	Phenomenal	Total suspension of fishing operations